



BK BIRLA CENTRE FOR EDUCATION

SARALA BIRLA GROUP OF SCHOOLS
SENIOR SECONDARY CO-ED DAY CUM BOYS'
RESIDENTIAL SCHOOL



Class: VII

Duration: 1 Hr

Date: 31/07/'24

Max. Marks: 25

General Instructions:

- i. This question paper consists of 12 questions in 3 sections.
 - ii. Section A consists of 3 objective type questions carrying 1 mark each.
 - iii. Section B consists of 5 Very Short questions carrying 02 marks each.
 - iv. Section C consists of 4 Short Answer type questions carrying 03 marks each.
-

MARKING SCHEME

- | | |
|-------------------------|---|
| 1. (a) NaOH | 1 |
| 2. The SI unit of heat: | 1 |
| (a) Joule | |

Direction: The question below consists of an Assertion (A) and a Reason (R). Use the following key to choose the appropriate answer.

- (a) If both assertion and reason are correct and reason is correct explanation of the assertion.
- (b) If both assertion and reason are correct, but the reason is not the correct explanation of the assertion.
- (c) If assertion is correct, but reason is incorrect.
- (d) If assertion is incorrect, but reason is correct.

- | | |
|--------|---|
| 3. (a) | 1 |
|--------|---|

SECTION B

Question No. 4 to 8 are very short answer questions

4. SULPHURIC ACID AND NITRIC ACID

2

5. Acid is a kind of chemical compound that when dissolved in water gives a solution with H^+ ion activity more than purified water. A base is an aqueous substance that donates electrons, accepts protons or releases hydroxide (OH^-) ions. An acid is a proton donor..

2

6. Give reason:

The vessels of cooking are made of metals but their handles are made of plastic because plastic is a poor conductor of heat. As a result, the handles do not get heated and able to hold during cooking.

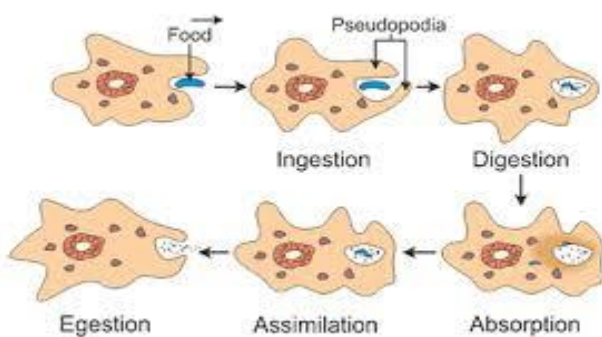
1+1

7. Land breezes arise from land, while sea breezes arise from the sea or other large bodies of water. The vital difference is due to the property of water to retain heat and warm up on a longer duration as compared to land. The offshore winds are known as a land breeze, and onshore winds are known as a sea breeze.

1+1

8.

2



SECTION C

Question No. 9 to 12 are short answer questions

9. (a) An indicator is a chemical compound that changes its colour in presence of an acid or base. Indicators are generally derived from plant pigments and are mildly acidic or basic in nature.

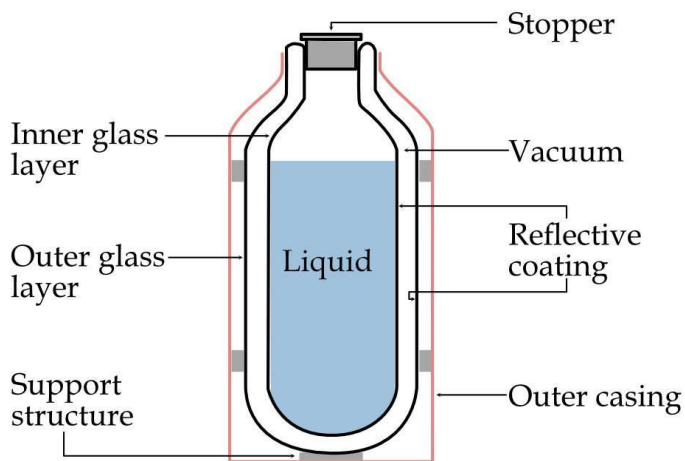
Phenolphthalein

3

(b) Tooth decay begins when bacteria in your mouth make acids that attack the tooth's surface (enamel). This can lead to a small hole in a tooth, called a cavity.

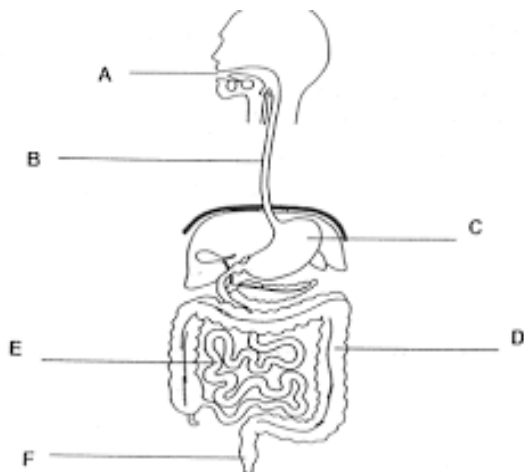
10. A thermos flask consists of two vessels, one placed within the other and joined at the neck. The gap between the two vessels is partially evacuated of air, creating a partial-vacuum which reduces heat conduction or convection.

1+2



11. Label the parts **a,b,c,d,e and f** in the human digestive system .

3



Ans: a..Mouth b.Oesophagus c.stomach d.Large intestine e.Small intestine
f.. Anus

12. (a) Digestion: The process by which food is broken down into simple absorbable substances 1

(b) Ruminant stomachs have four compartments :the omasum and abomasum, Rumen , Reticulum
Stomach is designed to digest the fibrous food 1

(c) Villi are finger-like projections present in the inner wall of the small intestine .They increase the
surface area for absorption. 1

**** Best of luck****